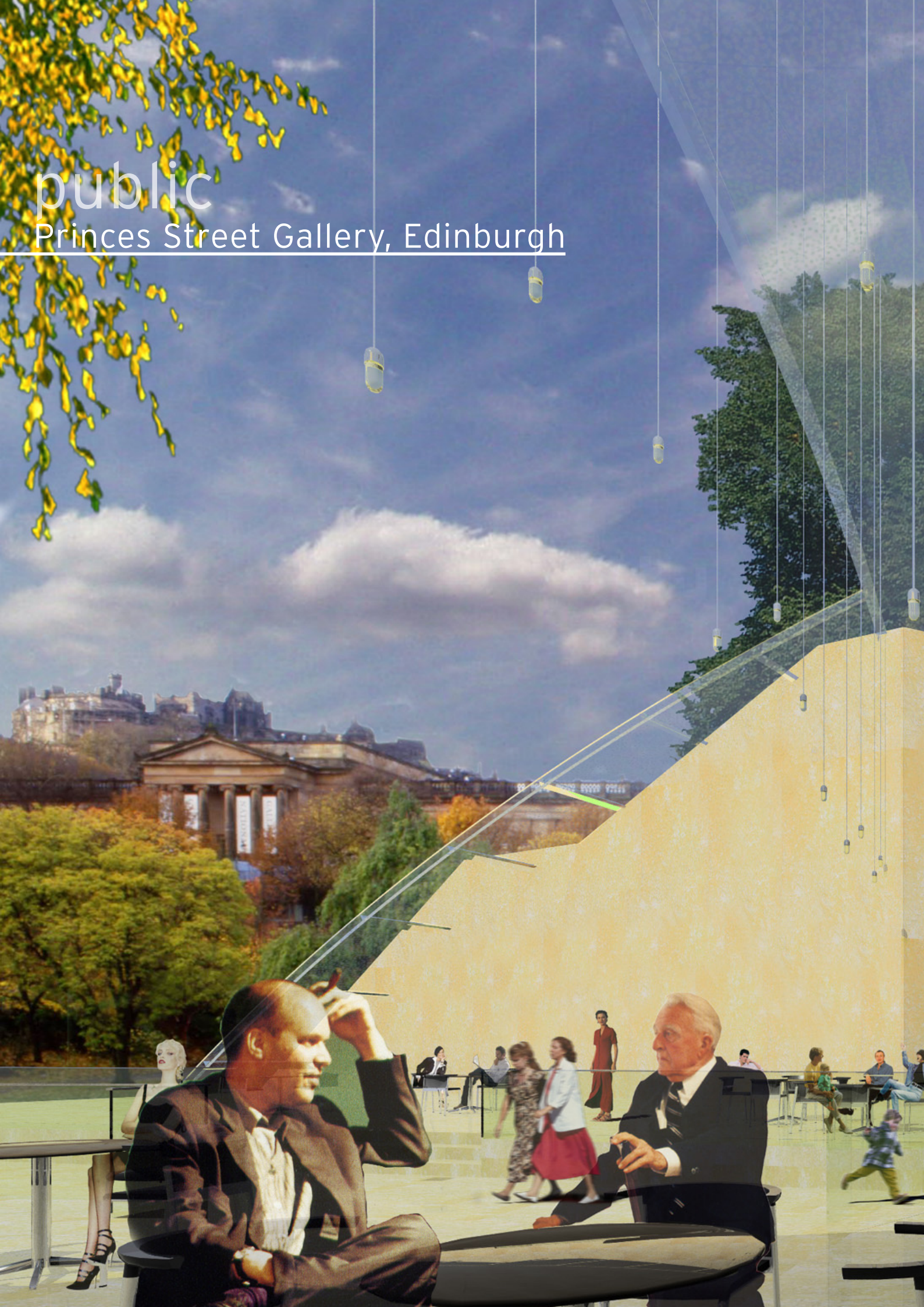
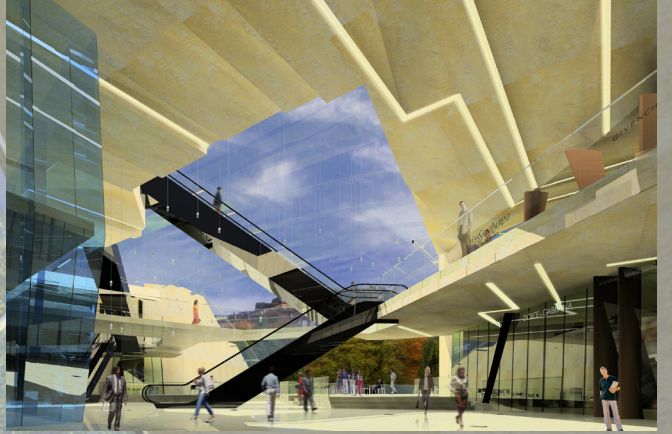


public

Princes Street Gallery, Edinburgh





The gallery is located on two levels beneath Princes Street; the first containing the main retail area and the second primarily accommodating public parking and service zones. Along the entire length of the site a retail-backbone runs as an extension of the commercial area behind it. Important feature of the project are three open spaces, offering room for social activities and allowing them to extend beyond retail hours. The gallery can be accessed directly from Princes Street these areas or from several other entrance points. Occasionally, these "voids" extend spatially into the second level, allowing public access to the parking and strengthening vertical connections within the gallery.



client

Joint Venture: The EDI Group Ltd and MAB

project

country: United Kingdom
city: Edinburgh
category: public
status: competition
gross floor area: ca. 2000 m²
design: 2002

designed by

diik van eyeraat