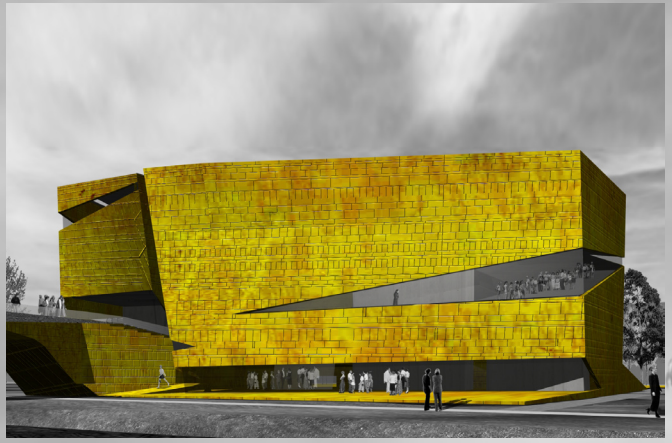


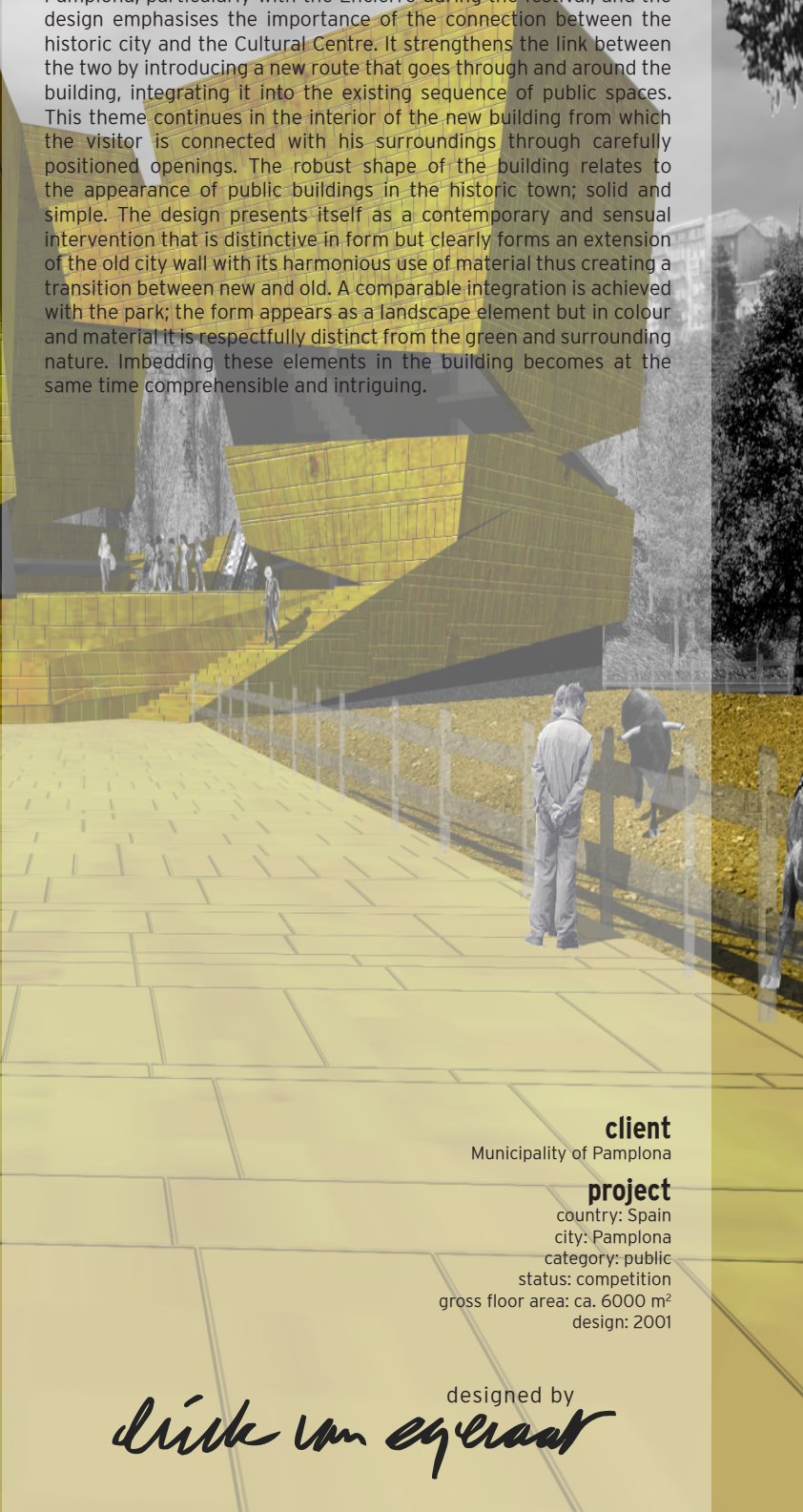
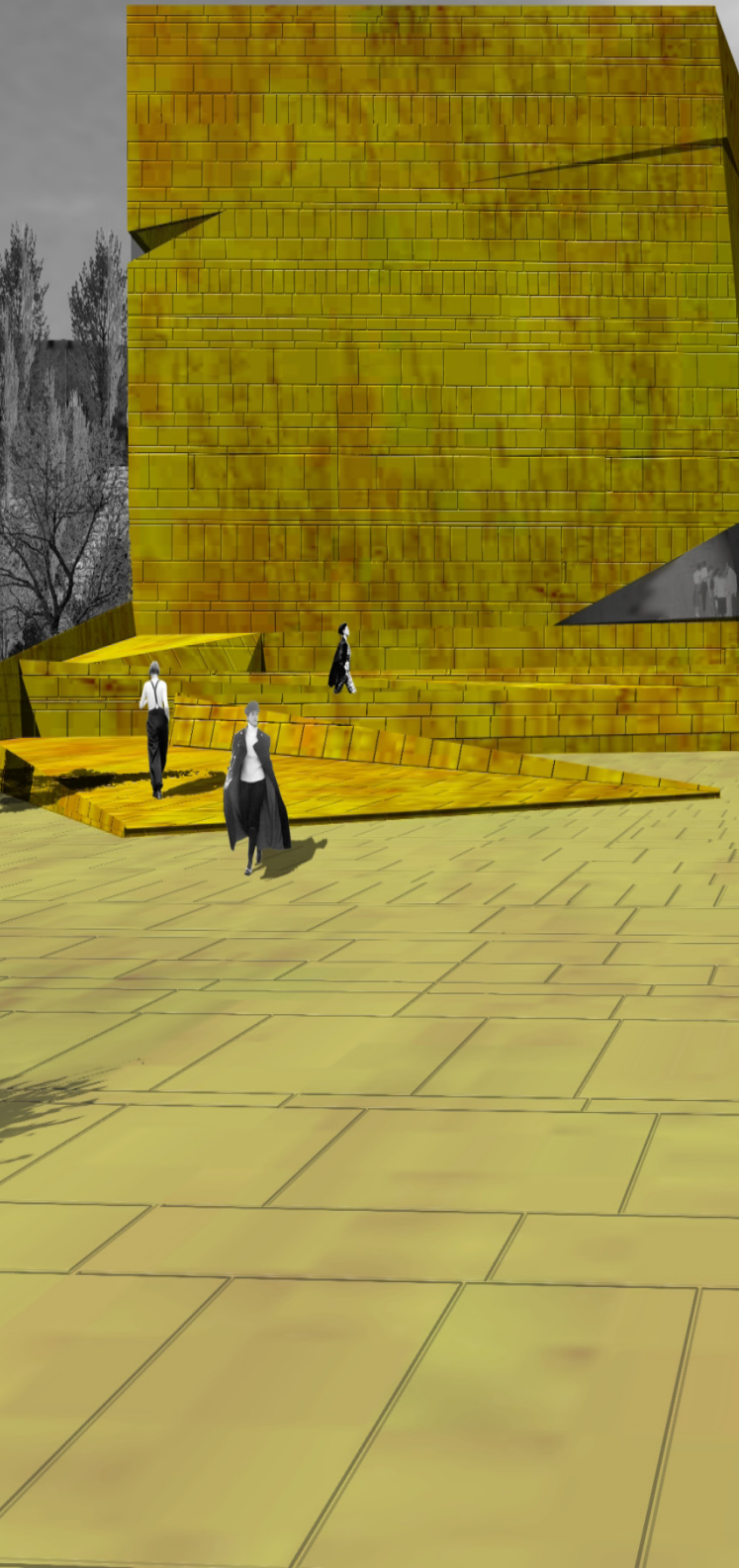


public

Cultural Centre San Fermin, Pamplona



The municipality of Pamplona invited a selection of national and international architects to submit proposals for a new Cultural Centre that bears the name of the famous annual San Fermin Festival. The site is located 40 meters beneath the main level of the old city within in the park zone along the river Arga to the north of the historic centre of the town. The theme of routes plays an important role in Pamplona, particularly with the Encierro during the festival, and the design emphasises the importance of the connection between the historic city and the Cultural Centre. It strengthens the link between the two by introducing a new route that goes through and around the building, integrating it into the existing sequence of public spaces. This theme continues in the interior of the new building from which the visitor is connected with his surroundings through carefully positioned openings. The robust shape of the building relates to the appearance of public buildings in the historic town; solid and simple. The design presents itself as a contemporary and sensual intervention that is distinctive in form but clearly forms an extension of the old city wall with its harmonious use of material thus creating a transition between new and old. A comparable integration is achieved with the park; the form appears as a landscape element but in colour and material it is respectfully distinct from the green and surrounding nature. Imbedding these elements in the building becomes at the same time comprehensible and intriguing.



**client**

Municipality of Pamplona

**project**

country: Spain

city: Pamplona

category: public

status: competition

gross floor area: ca. 6000 m<sup>2</sup>

design: 2001

designed by

*diik van egraat*